



# the CONNECTICUT GRANGER

Published Monthly

Vol. 63, No. 4

The Official News Magazine of the Connecticut State Grange

January 2023

## Fiduciary responsibility



**Robert Buck**  
State President  
Bethlehem Grange No. 121  
president@ctstategrange.org

The lesson of the Fourth Degree of our Order is FIDELITY. Now, I am sure that most of us think that our fidelity is well placed in respect to our Subordinate/Community Granges, and in most instances I am sure that it is. It has become a major concern of this new administration that our Granges are challenged in terms of finances and membership. This is why we are concentrating on Grange reorganization in Redding #15, Wallingford #33, Wilton (Cannon #152), Granby #5 and have several others in our sights since one longtime Sister has reached out to me for help in her Grange. Many Granges are having hard times and if yours is one of these, reach out to me and the Membership Committee under Shelley Cameron for help.

What is of great concern is a Grange that recently decided at a meeting to turn in their charter to the Connecticut State Grange, and then proceeded to deplete their treasury of its considerable funds by donating them to various respected charitable organizations, 18 in all. All of this without informing the State Grange of their intentions ahead of time and thereby violating the National Digest of Laws concerning

procedures for dissolution of Granges. They also violated their fiduciary responsibilities as elected Grange officers. Brothers and Sisters, I want to make it eminently clear that as an elected officer, you are a STEWARD of your Grange and must act in a way that is consistent with the best interests of the Order and of your Subordinate Grange. We carry bonding insurance on officers to protect against the misuse and/or abuse of Grange funds by elected officers.

### *Influential Connecticut Grangers:* **Lida & Sherman Ives**

*by Todd A. Gelineau, Editor*

Lida and Sherman Ives are what modern writers would call a “power couple” of the Grange. Both had tremendous impact on the Grange and their communities though their many varied activities and projects.

Lida Adeline Skilton Ives lived for many years in Morris and later in Glastonbury where she passed away in May of 1988 at the age of 86. She served on the boards of the American Red Cross and the National Land Army Directors and was one of the organizers of the United Service Organization (USO), a charitable organization that provides live entertainment to members of the US armed forces and their families.

During World War II she served as chairwoman of the National Grange Home Economics Committee (known today as either the CWA or Family Activities). She was also appointed to the Office of Price Administration by President Franklin Roosevelt. The OPA was formed in 1941 to place a ceiling on prices of most goods, and to limit consumption by rationing and to ensure defense appropriations were not dissipated by excessive prices.

In her “free” time, Lida was a member of the Daughters of the American Revolution, the Order of the Eastern Star and the American Legion Auxiliary. She was founder of the Morris Historical Society, secretary-

...Continued on page 3



**Connecticut State Grange**  
A part of the National Grange



**NEXT ISSUE . . . Articles Due Jan. 15**

# Fiduciary Responsibility

Continued from page one...

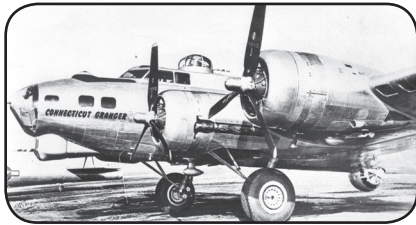
resources. This money is not yours as individuals, even officers, to give away to the detriment of the Grange. Furthermore, the bonding insurer could be made aware of this abuse and those individuals held responsible for their actions. These quick Grange liquidations are not consistent with your Grange oaths, the by-laws at the several levels, nor done with FIDELITY in mind. This

CAN NOT happen again!

I believe the time is ripe to re-institute Schools of Instruction for fundraising and maybe grant writing for larger sums of money Granges need for building maintenance; but also for secretaries and treasurers to cover proper record keeping and financial record keeping including filing quarterly and executive committee reports. Look out for more on this.

With the Blue Book to come out shortly, look to see where your Grange can keep active participating in contests, community service, and donations to specified charities and causes your Grange supports regularly. I look forward to fraternal visitations to Granges and catching up with your programming and meeting many of you I don't know so well. Keep the FAITH, HOPE and PERSEVERE in your plans. I know we have the CHARITY part in our hearts as I look over what you are doing in your communities.

**the Connecticut Granger**  
Published Monthly



WW II Flying Fortress "Connecticut Granger"

### STAFF

President/Editor . . . . . Todd A. Gelineau  
Vice President . . . . . Terri Fassio  
Treasurer . . . . . Jody Cameron  
Secretary . . . . . Noel Miller

### DEADLINE/CORRECTIONS

News is due on the  
**15th Day** of each month  
and should be sent to:  
Connecticut State Grange  
100 Newfield Road  
P.O. Box 3

Winchester Center, CT 06094  
or Todd Gelineau, Editor  
P.O. Box 1134, Sharon, CT 06069  
Granger@CTStateGrange.org

(USPS 563-220)

### the Connecticut Granger

is published monthly for \$10.00/yr. by:

Connecticut Granger, Inc.  
100 Newfield Road, P.O. Box 4  
Winchester Center, CT 06094

Periodicals postage paid  
at Winsted, CT 06098

### POSTMASTER:

Send address changes to:  
Connecticut Granger,  
100 Newfield Road, P.O. Box 3  
Winchester Center, CT 06094

# Family Activities Committee



**Dawn Percoski**  
Family Activities Dir.  
Vernon Grange No. 52  
CWA@ctstategrange.org

Happy New Year to everyone! As I am writing this article in December, I am roasting pumpkin seeds and cooking up the remaining sugar pumpkins from my garden. It doesn't matter what season you are in, there is always something to do. Try making larger projects that can keep you warm at the same time. I have been working on Afghans to donate to the Big E while watching Christmas movies so I am multitasking while keeping myself warm. If you are a quilter, there is also the National Lecturers contest which you can find on our state website. By now all of the new information should be posted there. So much to choose from, so little time.

Consider making your donations to food pantry's, soup kitchens, our four legged friends or whatever supports your towns. A little goes a long way as well as going toward your Family Activities and Community Service goals. Not going out much? Consider logging on to a zoom meeting for your Grange or any other Grange. What a great way to

talk and meet with other Grangers whom you may not otherwise be able to enjoy as well as not using gas. Go on the State website and look up who has zoom meetings and surprise them with the gift of your presence.

Write a letter to members that are home bound or in Nursing homes. Write a letter to our military folks who are overseas and could use a word from home. Save those postage stamps, if you are not already using them in a project, you can always send them to me! There are so many small ways in which you can be a participant and it helps us to stay connected with our Grange family. Don't forget the National Lecturers photo contests which are virtual. All you need to do is upload your pictures. The categories are Farm Machinery, Pot Luck Activities, Gardens and Grange Family. This is open to Grange and Non-Grange members. Check out the National website for all kinds of great information.

Niagara Falls  
New York

November  
14-18, 2023

Sheraton  
at the Falls

# Lida & Sherman Ives

*Continued from page one...*

treasurer of the East Morris Cemetery Association, a member and secretary of the Morris Board of Finance, executive vice chair of the Morris Centennial Committee and chair of the local committee that celebrated the U.S. bicentennial.

In the Grange, Lida served in many offices in her Subordinate and Pomona Grange, including longtime Secretary of Mountain County Pomona No. 4. In 1953, Lida wrote the second volume of Connecticut State Grange history "The Grange In Connecticut" which picked up the history from the first volume "The Connecticut Granges" published in 1900. Both volumes are invaluable resources to this day.

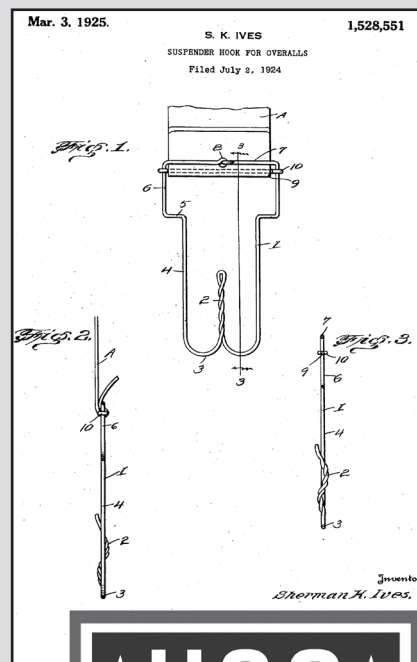
Sherman Kimberly Ives was born in Goshen on April 18, 1902. Sherman served as a State Representative from 1953 to 1957 and was founder and original owner of the Ives Insurance Company. He served as President and member of the Board of Directors of the Patrons Mutual Insurance Company for 36 years. Upon his retirement Sherman said, "Through the years I have carefully and zealously guarded the principles this company was founded on; First to service the Grange and then to strengthen the Grange... This I charge you, is a sacred trust, not one to be lightly passed over or ignored. If others in our field had remained faithful, the Grange would be a bigger and better organization for that guardianship."

Service to the Grange was not limited to his work at Patrons Mutual as he served as President of the Connecticut State Grange from 1940-1943 while Lida was serving as National Home Economics Director and on President Truman's OPA.

Sherman was a member of the Advisory Committee on Insurance appointed by President Truman and served on an agriculture committee for Connecticut, Massachusetts and Pennsylvania under President Eisenhower. Locally he was a certified life underwriter and former town treasurer of Morris. He was a director and honorary director of the First National Bank of Litchfield, a life member of the Goshen Agricultural Society (Goshen Fair) and the Union Agricultural Society (Riverton Fair), a past deacon of the Morris Congregational Church and a charter member of the Morris Volunteer Fire Department.

He was a member of the Litchfield County University Club, past master of St. Paul's Lodge AF&AM; past Master of Morris, Litchfield and Mountain County Pomona Granges; past secretary and treasurer of the National Federation of Grange Insurance Companies and past national director of the Association of National Insurance Companies. He was honored with national recognition as a member of the Future Farmers of Connecticut and by the 4H clubs for his work in

*Did you know...*



Sherman Ives held patent No. 1,528,551 for Suspender Hook for Overalls filed in July 1924 with the United States Patent Office.

Lida Ives was one of the organizers of the United Service Organization (USO), a charitable organization that provides live entertainment to members of the US armed forces and their families.



farming. He passed at the age of 67 in 1970.

Together, Sherman and Lida had five children, Bradford, Carolyn, Virginia, Esther and Alden. All of the children were Grange members. Alden was State Senator and Treasurer of the State of Connecticut and followed in his father's footsteps as President of Patrons Mutual.

Lida and Sherman spent a great deal of their later years in Florida which inspired them to establish Granges in their second home state. They established so many Granges that the Florida State Grange was soon organized. By 1963 there were 32 Granges in the state and Lida was elected as the first female Master of the Florida State Grange, a first for any State Grange in the country. This election was made possible by the advancement of a resolution presented by Connecticut State Grange Master Robert K. Mitchell establishing "dual membership." This new membership tool enabled many Conn. State Grange members to hold membership in Florida and Connecticut. Connecticut was represented by members in each of the 32 Granges in Florida making it essentially Connecticut's winter Grange.

The accomplishments of the Ives family are staggering by any standard. Like many of the members featured in this series of articles, their impact on the Grange and their communities continues to be felt long after their passing.

# Legislatively Speaking



**Noel Miller**  
Legislative Director

Coventry Grange #75  
millernoel434@gmail.com

With the elections behind us, now is the time for our politicians to work together and get much needed legislation done. The 2023 Farm Bill needs to be created with language and money allocated for American Dairy Farmers so that production costs are included into the equation for Milk Market Pricing. This is necessary for large and small, cooperative and family farms to get a price for their milk they can survive on. Is it fair to ask our dairy farmers to be paid \$1.50 per gallon of milk when it costs them \$1.75 per gallon. Regulations need to be reviewed so that equal parity is given for our faithful farmers to get a liveable income. The farmers feed the world.

Haters gotta hate. Our nation is becoming a nation of hate. Some of our politicians are leading the call for a civil war in our nation. I am a history buff, and after the January 6, 2021 riot at the Capitol, and January 6th hearings show that someone has to be held accountable for the actions of that day. Many say January 6 was a 1776 moment, and they should be called Patriots, but Patriots fought for democracy, while the Tories fought to keep the present system of King and Country. Therefore Patriots should be for the members that fought off the attackers and Tories for the rioters wanting to keep the King in charge. Remember, the Tories returned to England or escaped to Canada afore the forming of the United States of America.

Politicians tell us about their version of History, where a Senator stated the Declaration of Independence stated that all men are created equal. We know that black men were not equal, and

even Abigail Adams implored John Adams to remember the women who help supply, feed, and equip the Continental Army during the Revolutionary War, yet they were left out too. Others have called for the Constitution to be overruled. It is needed when it serves you, but unnecessary when it opposes you. This is not the America I was raised up and taught to love. So let's all get back on the same side of democracy.

The Grange was founded after the Civil War to bring an organization for farmers, for educational, social and legislation. We are called Brothers and Sisters because we treat everyone as family. "We ask none to join us who cannot see good in their fellow beings, but to all interested in agriculture, who have generous hearts and open hands to

help the needy, raise the fallen and aid in making the labors of this life cheerful. We say 'Welcome to the Grange.'

In Connecticut we had a Special Session to extend the gas tax relief program to the end of 2022. We also added a mileage tax for diesel trucks of 10 cents per mile. This cost surely will be passed on to the consumer.

At the National level, we need to investigate the purchase of farmland by foreign countries. Farmland is being bought by Canada and China. Some farms near military bases are being purchased by Chinese owners. Is this wise with the risk to national security? Red flags are raised and flashing a code. NOOO!!

Our new year's resolution should be for all to a little nicer to our fellow Americans. Watch out for scammers, they are working overtime to rip you off.

Happy New Years!

## Wallingford Revitalized



by *Todd A. Gelineau, Editor*

On December 5, new State President Robert Buck met with a group interested in re-opening Wallingford Grange No. 33.

The previous Wallingford Grange closed in July when its membership had dwindled to just a few active members. Anyone who has visited Wallingford knows they have a large and beautiful hall. The State Grange faced a difficult decision to either sell the hall or form a new Grange.

Elizabeth Jensen (of Redding Grange) approached the State Grange with a plan to evaluate the feasibility of re-opening the Grange.

She was given a few months to look into it and report back. In a relatively short amount of time 23 new members were identified.

On December 5, Wallingford Grange met the required number of new members and their charter was restored with a full slate of new officers (minus LAS) elected and installed that evening.

The Connecticut State Grange congratulates the members of Wallingford Grange No. 33 and welcomes them into their new Grange family. There's much work to be done and this is a group we know can get it done!



## Celebrate a Holiday

*Terri Fassio, PR Co-Director*

The Public Relations Committee recently met and reviewed our contest offerings from the past years. We decided that since we did not receive many entries, we would limit our program for the next two years to one new contest.

Introducing... Celebrate a Holiday!

Whether you're celebrating Easter, Christmas, Flag Day or even Chocolate Chip Cookie Lover's Day, holidays can be fun to explore, and base themed Grange events, and even a Grange program, on. Whether your Grange has in-person, virtual, or hybrid celebrations, it

means thinking outside of the box to show the impact of your Grange when utilizing holiday themes.

This is a great opportunity to highlight your Grange's holiday achievements, raise awareness of your Grange's mission, thank your members and community, and reveal exciting updates about your future holiday plans.

Submit a detailed written plan on how your Grange celebrated with a Holiday theme, and promoted your Grange through an event, program or more. Then write a synopsis of a your Grange's celebration (must be held within the last year). The holiday celebrated is the choice of

the Grange. There are no Holiday restrictions.

There will be three categories —

1. Grange Holiday Events
2. Grange Holiday Programs
3. Other Grange Holiday Celebration

Celebration

Submissions should be detailed and not just an abbreviated list, and there is no length restriction. Photos, clippings, and social media and website screenshots are encouraged. Submissions must include the category, Grange name and number, number of years hosting this celebration (i.e. first year or 50 years), and the name, phone number and email of person submitting the entry.

Email your Grange's submission to [publicrelations@ctstategrange.org](mailto:publicrelations@ctstategrange.org). You can also USPS mail the submission to Robert Charbonneau, 102 Spring Street, Meriden, CT 06451. Deadline is October 1st.

## The Ins & Outs of Spam/Junk Mail

*Terri Fassio, PR Co-Director*

Do messages you receive from @CTStateGrange.org email accounts go to your SPAM/Junk Mail folder?

We are getting reports that for some recipients, messages from CTStateGrange.org email addresses are sporadically going to SPAM and Junk Mail folders instead of arriving in the recipients' inboxes. The issue with this is that the recipient may miss important or pertinent messages because they do not regularly check their SPAM/Junk Mail folders.

### How does this all work?

A SPAM/Junk Mail folder is a holding place for emails suspected of being malicious, deceptive or unsolicited. All email provider services (examples would be gMail, AOL, Yahoo, Outlook.com, etc.) use a numeric scoring system based on a variety of different filters to determine which emails are likely to be real messages and which are SPAM messages, and then those messages not making the cut are sent to the person's SPAM/Junk Mail folder (and in some cases, deleted

altogether by the email provider server-side, where then the recipient would not receive the message at all). Each email provider uses their own unique scoring system, and some are stronger than others. SPAM/Junk Mail filtering has been growing more complex over the years, as there has been an influx of SPAM and Junk Mail messages circulating.

The problem is, legitimate emails can sometimes get trapped in the filtering and end up in the SPAM/Junk Mail folder. There are a variety of reasons why this can happen, such as the message has no subject line, the message has too many recipients in the "To" field, the message has too many attachments, or an attachment of a non-traditional format (such as a DMG file or an ISO file), the email address has been reported as SPAM or JUNK previously and has ended up on a black list, the message has no body copy text and just a link, and also when the message has either too many links, or has links that go to websites that may be deemed as an issue (for example, links to

social media websites or commercial stores are websites often fall into this category.)

All email servers keep track of email addresses and their scores and practices, and this sets a precedent going forward. Servers that process email messages continually learn through the actions associated with each message, what is good mail and what is not. For example, if Joe Smith never puts a subject line on his emails, and then often will send a message to a recipient with just a link to something he finds interesting or a joke he finds funny, the servers will see his email address as suspect because his messages keep scoring as if his messages are SPAM, and thus the server filters will eventually add his email address to a black list. Then Joe's messages will end up in the recipient's SPAM/Junk Mail folder. The problem then grows when other people on the same domain (the part of the email address that comes after the @ sign) suffer from Joe Smith's bad email habits.

### How do we fix this?

Sadly, there is no quick and easy

...Continued on page 6

# Junk Mail

*Continued from page 5...*

fix. But there are things that can be done by the email recipient, the email sender, and also by the email provider, to minimize the impact of emails being wrongly sent to SPAM/Junk Mail folders. Here's a few tips and tricks:

## **The Email Recipient:**

1. If you receive a message in your SPAM/Junk Mail folder that should not be there, the first step is to right-click (or option-click) on the message and mark it as either "White Listed" or "Trusted" by your email program. If you have the option, send the email address to a "Safe Senders" list. Some email programs have a "Move to Inbox" feature. These practices will help train your email program on what is good mail and what is bad mail.

2. Add contacts that you want to easily receive messages from into your address book or contact list. Most email programs have an easy way to do this by right-clicking on a message or finding a command under the program's menu. ALL email programs will check every message that comes into your mailbox against your contact list or address book first before applying other filters.

3. Take the time to "black list" or mark as SPAM/Junk messages that are unsolicited and that you do NOT want to receive in your inbox. Again, in most programs, this is a simple right-click command on each message.

4. Check your SPAM/Junk Mail folder regularly. Monitoring your SPAM/Junk Mail folder on a consistent basis will help to ensure that future messages are not flagged as SPAM, and will improve the quality of your email and inbox experience. If you do find a message in your SPAM/Junk Mail that should not be there, be sure to take actions (see above) to ensure that the message will go to its proper destination.

## **The Email Sender:**

1. Always use a short and succinct subject line on every message you send. Also note that the content of your subject can trigger a message as

being marked SPAM too. Do not use all caps, excessive exclamation points or excessive dollar signs as these are sure-fire ways to have your message go immediately to the recipient's SPAM folder. And be sure to watch out for "SPAM-type" phrasings, such as 100% Free, Deal of a Lifetime, Flash Sale, Free Gift, 100% Satisfied, Free Prize, Hurry, etc., as these are some of the most common phrases found in SPAM messages.

2. Be sure that each message you send has at least one or two lines of copy in it. It's easy to get lax when sending messages with attachments by just attaching the file(s) and not typing a message to go with it. Particularly when the recipient is expecting the message with the attachment. Messages with no body copy will surely be seen as SPAM if this continually happens from your email address.

3. Proof read your messages. It's always a good idea to proofread, and check and recheck your emails before hitting the send button. Typos and excessive grammatical errors can quickly trigger spam filters. That's because email scams (particular phishing emails) are typically filled with mistakes. Spammers do this intentionally to receive responses only from their most gullible recipients to avoid wasting time going back and forth with too many people, as they generally send out thousands of email messages at one time. That being said, the more you make typos/errors while writing emails, the higher your chances of your messages ending up in the recipient's SPAM/Junk folder.

4. Proofread the email address you are sending to. It's easy to make an error when typing an email address, and particularly so with long email addresses. When there is a typo in the address, not only will the recipient not receive the message, the sending server will get a point against their reputation. (This is called a Bounce). Too many negative instances, and the sending server will be black listed.

5. Make sure that all messages with links have at least a couple of lines to go with the link. It's not the time to be a lazy sender when sharing a link. Type the name of the website

where the link goes to, and add a brief description of what the link is about.

6. Use the BCC function when sending out emails to multiple people instead of having all the recipients listed in the "To" field. This is a very common issue that we see with CT State Grange outgoing email. Servers see emails with multiple recipients as SPAM. The more recipients in the "To" field, the more likely the message will be considered SPAM mail. Every email provider has a different number that is the breaking point on a message, and these numbers are not often published. It is known that for some providers the number is as low as 6 to 10 recipients. When a message is sent out with BCC recipients, each recipient is sent as an individual message, not a group message, thus avoiding the server-side SPAM filtering altogether.

7. Use a typed signature with your email address at the close of your messages. It's easy to add a couple of lines at the bottom of an outgoing message with your name, email address, phone number, title, and other pertinent contact information. Many email programs have the ability to pre-set signatures. This helps the recipient to know how to contact you, and also helps the server validate a message. Note that graphics in the signature will go against the sender in most cases. So don't add a photo or a logo to your email signature - keep to just text.

8. Use a shortcut name that matches your email account. Every email address has a "short cut" name associated with it. That is why you will sometimes just see the person's name in the to or from field, and not the actual email address the email is being sent or received from. When you initially set-up your email account, you were asked to supply this information, but it is not always a "required" field. This also opens up all email addresses to be misleading when the short name does not match the email address and account. Misleading recipients with incorrect information is illegal under the CAN-SPAM Act, but spammers will consistently use this method to fake

*...Continued on page 7*

## Junk Mail

*Continued from page 6...*

out emails with gullible recipients. A good practice is to use your name, name and title (if applicable), name and business/organization, or even just the email address itself. For example, use “Joe Smith” or “Joe Smith, Connecticut State Grange”. Some email providers will pull the short cut name from your address book/contact entry, so it may not be easy to spot when a short cut is not set-up within the account itself. Check your account settings to make sure that the complete information is listed.

9. When an email is sent as a “mass email” to many people, some of which may be unsolicited, like an e-newsletter or email alert, be sure to have complete contact information and an unsubscribe link at the bottom of the message. Recipients need to be able to easily opt-out of future communications. If you omit an easy-to-find unsubscribe link, your messages most likely go directly into the SPAM folder. If you use a mass email provider (such as Constant Contact, MailChimp, Mailer Light, etc.) this is quickly set-up when you subscribe to the program. Also be sure to not flood a recipient’s inbox. Mass emails should not be sent multiple times a day. An ideal frequency is no more than twice, and on occasion perhaps three times a week. Recipients and subscribers should not be overwhelmed by receiving too many emails.

### **The Email Provider:**

1. Use authentication. Authentication is a process that verifies the owner of a domain name. Authentication involves sending encrypted messages from the email provider’s server to recipients’ servers for validation purposes. This all happens behind the scenes. Without proper authentication in place, many email providers block non-authenticated incoming mail completely. All CTStateGrange.org email addresses are authenticated, and must be set-up as such in all user’s email programs (like Outlook, MacMail, etc.)

2. Use of SPAM checkers and Black Lists. Using spam checkers and black lists are effective ways to improve the delivery of outgoing and incoming emails. All hosting servers associated with CTStateGrange.org email use both SPAM checkers and black lists to improve email deliverability.

3. Watch bounce rates. A high bounce rate (more than 4%) usually means that an email address is outdated, low quality, or purchased. Email providers (Gmail, Outlook, Yahoo) treat such senders poorly and affect their senders’ reputation. The CT State Grange email provider is updated regularly with the domain’s bounce rates.

4. Keep email recipient lists clean and updated. If a recipient has not opened an email from the sending server in the last 6-12 months, then that recipient should be treated as inactive, and potentially unsubscribed from any lists. Alternate forms of contact with those recipients then become important. The CT State Grange Public Relations team checks and updates their email address lists multiple times a year.

Questions, comments, concerns? Email Terri at [information@ctstategrange.org](mailto:information@ctstategrange.org) or Bob at [publicrelations@ctstategrange.org](mailto:publicrelations@ctstategrange.org) today.

## CONNECTICUT STATE GRANGE

# Virtual SOCIAL HOUR



### Promoting Your Grange: Tips and Tricks from the Public Relations Committee

➔ THURSDAY ➔  
JANUARY 26, 2023 • 7:00 PM

Join us for a fun and casual social gathering  
and explore new and improved tips and ideas  
on promoting your Grange.  
Stop by and say Hello!



Send an e-mail to  
[information@ctstategrange.org](mailto:information@ctstategrange.org)  
for the Zoom Meeting Access Information

# General Tso's Cauliflower



This recipe was made for those nights when you have a little more time (think, like, Wednesdays. Wednesdays are just nicer, aren't they?), and you may already have a stocked kitchen, and you're excited to try something new, and you are feeling a little more ambitious than the usual must get food in mouth ASAP kinda thing.

### Ingredients:

- 1 tbsp. Sesame oil
- 3 cloves garlic, minced
- 1 knob of ginger, grated
- 1/2 cup chicken or veg. broth
- 1/2 cup soy sauce
- 1/3 cup rice vinegar
- 1/4 cup sugar (more to taste)
- 2 tbsp. tomato paste
- 2 tbsp. cornstarch, dissolved in 1-2 tbsp. of cold water

### For the Batter:

- 1 cup flour
- 2/3 cup cornstarch
- 1-1/2 tsp. salt
- 4 eggs
- water as needed (about 1/2 cup)

### Other Ingredients:

- 1 head cauliflower, cut into small florets
- A deep layer of oil for frying
- scallions and sesame seeds for topping

### Instructions:

General Tso's Sauce: Heat the sesame oil in a small saucepan over medium low heat. Add the ginger and garlic and stir fry for a minute or two. Add remaining ingredients and whisk to combine. Bring to a low boil; simmer for another 20-30 minutes or until sauce is thickened. add more sweetness, citrus, etc. to your taste.

Cauliflower Batter: Whisk all the batter ingredients until a loose batter forms. The batter should be thick enough to cling to the cauliflower and cover it but stay loose enough to easily drip off (adjust thickness with water).

Cauliflower Frying: Pour oil in a heavy bottomed skillet to make it deep enough so it will cover the cauliflower half way (probably ends up being a few cups). Heat the oil over medium heat. Drop a small bit of batter into the oil to test it- when it rises to the top and bubbles, the oil is ready. Dip cauliflower florets in the batter and let the excess drip off before gently setting in the oil. Fry for a few minutes on each side, then flip, repeating sides several times if necessary until you get a nice golden brown fried exterior. The additional frying time helps make it a little crunchier. Remove and set on a cooling rack with paper towels underneath (again, rather than putting it all on a plate or bowl with paper towels, this keeps it crispy vs. soggy).

### Serving:

Toss the fried cauliflower with the sauce (enough just to cover) and sprinkle with scallions and sesame seeds for serving. Serve with rice.

*Recipe from pinchofyum.com*



I went Simsbury Grange with Rob the State President to see Sir Jon McEngland's Beatlemania Sunday afternoon, December 18. The snacks and drinks were great. The show was fantastic, and Sue Masino and all the other folks in Simsbury were so nice. Sue Masino gave a great introduction to the Grange, and especially Simsbury Grange and all the great stuff they do. We sat with Past State President Noel and Past First Lady Marcia Miller. Talked to State Lecturer Dave Roberts and and met Wally. Good crowd of enthusiastic Beatles fans. Sir Jon was great and we all got to sing along.







**EASTERN CT POMONA #14**

*Corr: Noel Miller*

**Mar. 4:** “Pass the Buck” - Glastonbury Grange, Masonic Hall, South Glastonbury, 7:00 P.M.

**GLASTONBURY GRANGE #26**

*Corr: Kathryn Ruff*

**Jan. 5:** “Begin a New Year”, 7:30 P.M.

**Feb. 2:** “Presidents & Valentines”, 7:30 P.M.

Glastonbury Grange has decided to meet on Zoom for the winter months. Our last meeting was on Zoom and had 8 members present.

Our membership is mostly on the elderly side and we felt it safer for them to stay at home after dark. Also this avoids snowy roads driving and under foot.

We hope you all had a Merry Christmas and Happy New Year and are looking forward to all that 2023 will bring.

Much thanks to Brother Herbert Grommeck who hosts our meeting from Florida.

**SENEXET GRANGE #40**

*Corr: Diane Miller*

**Jan. 25:** Valentines for the Community

We had a busy fall with many events at the Grange hall. We made Thanksgiving Pies as a fundraiser we will also make and sell Christmas pies. This is very popular.

A Christmas gift exchange and ugly sweater program. was held in November. Dinner was

served before the program. Also in December we had a soup supper fundraiser This was also well attended. Our Grange was a big part of the Woodstock Winter Festival. We used the upstairs as a vendor venue and the downstairs for a luncheon as well as crafts for kids and signing cards with messages for the local nursing homes.

We continue to sell our recycled shopping bags. Local groups continue to use the hall for Yoga and home school classes. A teen group meets there as well twice a month. We draped our charter in loving memory of long time member Clarence Ballard. We continue to keep the Grange active and invite other groups to use it. We hope this keeps the community aware of our mission.

**VERNON GRANGE #52**

*Corr: Irene Percoski*

**Jan. 6:** No Meeting

**Jan. 13:** Seed Catalogs

**Feb. 2:** Exchange Program - Vernon at Coventry

**Feb. 3:** Exchange Program - Coventry at Vernon

**Mar. 3:** Pass the Buck

The November meeting was all about stress and suggestions on how to reduce it. We learned about the six components of Yoga and all members joined in doing some Yoga chair exercises. We also practiced different ways to meditate. Stress is also releases with laughter, as Yogi Jokes (or groaners) were read by members. After the meeting everyone pitched in to fill 19 packages of all the collected items and a gift card which were to be distributed to the veterans at Phelps Village in Rockville. When all was nicely wrapped and tied with a bow we held our Yankee Christmas gift swap. I do believe the rules for the swap need to be a bit clearer. There was a little confusion. A last bit of laughter was a reading on the Night Before Christmas entitled “Some Assembly Required.” We were all pleased to see Gordon via Zoom and

a visit by Deputy Ted Beebe. All those present were encouraged to send Christmas cards to brothers and sisters, who cannot, for one reason or another, attend meetings. It’s important in these times to stay in touch with each other. We hope everyone had a safe, sensible New Year.

**COVENTRY GRANGE #75**

*Corr: Noel Miller*

**Jan. 5:** Happy New Year

**Feb. 2:** Vernon Grange Exchange

**N. STONINGTON COMM. GRANGE #138**

*Corr: Nancy Weissmuller*

Our Christmas party was lots of fun! The hall was decked out in glittering splendor. Our new Christmas tree, donated by Cheree and Robert Miner took center stage up front by Santa’s chair. Lecturer Sue Pianka read The Little Drummer Boy to a group of excited children then gave each child a copy of the book. We sang Christmas songs before Santa arrived with his bag of gifts. As well as gifts from Santa everyone received an apple, a candy cane and a tiny stocking ornament. Refreshments were outstanding and everyone left full and happy.

Our usual caroling around town fell on the night of a nasty storm, so we surprised some people when we arrived a few nights later. Along with the carols we delivered delicious fruit baskets, candy and an ornament. We also donated many gift certificates to our local food cupboard to brighten the day for families in need.

Just a gentle reminder (and to save a stamp), if you haven’t paid your dues yet, please do.

Our next program will be hosted by Nancy Weissmuller. Should be fun! And if those pounds that sneaked on during the holidays will just sneak themselves off again, next time we’ll tell you all about jolly January.



**MOUNTAIN LAUREL POMONA #15**

*Corr: Todd A. Gelineau*

Mountain Laurel Pomona met on Dec. 3 at Winchester Grange for our Christmas meeting and gift exchange. Our next meeting is scheduled for March 4 at Riverton Grange Hall beginning at 2:00 P.M. The program is entitled “Spring Ahead.”

**WINCHESTER GRANGE #74**

*Corr: Todd A. Gelineau*

**Jan. 10:** Winter Wonderland, Ref. by Rae Fassio & Sue Kline

**Jan. 24:** Howl at the Moon, Ref. by Last Names A-D

**Feb. 14:** Hears & Flowers (Country Store), Ref. by Peter & Mary Lou Keefe

**Feb. 28:** President Who? (Potluck at 6 P.M.), All Members

Winchester Grange met for its only meeting of December on the 13th for our Christmas Gift Exchange.

There was a bit of concern in the neighborhood around the Grange Hall when a large 16 foot roll off dumpster was delivered to the front of the Grange Hall in December. Usually this means a clean out prior to a property transfer. In this case, it was just a clean-out of the garage. 70 years of accumulated items in the garage necessitated the dumpster and we thank Treasurer Bill Ahrens for arranging for it.



Above left: Aaron Jacques is installed as the new President of Bridgewater Grange at their Dec. 16 meeting. Above right: Santa talks with children at Bridgewater Grange’s Hot Chocolate, Cookies and Santa event.



The Grange has a couple of individuals interested in renting out the bays of the garage for the winter months (and beyond). This will provide additional income for the Grange that will be added to the rental income of the State Grange office space and the post office space at the back of the garage. Fortunately our hall is large enough that it can generate income for the organization on a reliable continuing basis.

Thanks also go to Craig, Patrick, Sue, Bill and Todd for getting the clean-up done in just a few hours on Dec. 17.

We will return to our twice monthly schedule of meetings in January. As always, we welcome guests at all meetings. If you would like to attend on Zoom, please send an email to Secretary@CTStateGrange.org and we’ll be happy to get you the meeting information to attend!

**TAGHHANNUCK GRANGE #100**

*Corr: Barbara Prindle*

**Jan. 12:** Iran by John Brett; Ref. Brent Prindle

**Feb. 9:** Winter by Barbara Prindle; Ref. Howard Randall

We divided the EMR scholarship among the ambulance squads of Cornwall, Sharon and Falls Village according to how many members took the EMR/EMT course in each town to help them offset their cost.

Thank you to Dennis Jasmine who stopped by at our December meeting. He graciously filled in for Ruth Schnell, our Overseer, who was ill and could not make the meeting.

Dictionaries were given out to Cornwall Consolidated School and Sharon Center School 3rd graders. I was a delight to see two very well used dictionaries in a pile of books in the Sharon classroom. Several of the students had older siblings with the same book as we have been doing this for 16 years. The Warren and Kent schools will be getting theirs by the time you read this.

On Thursday, January 26th at 1:00PM in our Grange Hall we are having a Krauting Bee in the afternoon offered in conjunction with The Motherhouse Old Style Life-Skills Series of workshops. Come and discover the magical kitchen alchemy of lacto-fermentation.

The information contained in each issue of The Connecticut Granger is for informational purposes only. The Connecticut Granger assumes no liability or responsibility for any inaccurate, delayed or incomplete information, nor for any actions taken in reliance thereon. The information contained about each individual, event or organization has been provided by such individual, event organizers or organization without verification by us. The opinion expressed in each article is the opinion of its author and does not necessarily reflect the opinion of The Connecticut Granger. Therefore, The Connecticut Granger carries no responsibility for the opinion expressed herein.



**NUTMEG POMONA #16**

*Corr: Joanne Cipriano*

Nutmeg Pomona held its quarterly meeting and Christmas Party at Cheshire Grange on December 4th. Good meeting, fun program, a huge country store and to top it all off, delicious refreshments served by Cheshire Grange.

We received some thank you notes from the Granges for our donation to help with their heating expense this winter. All were most appreciative. Just one of the things the Pomona does. We could do even more if we had a few more Granges attend.

The Pomona only meets four times a year on a Sunday afternoon at 2 P.M. Meeting over by 4 P.M. You don't even have to think of getting supper ready. We always have great refreshments and you go home with your belly full. Mark your calendar for our next meeting - March 26th at Cheshire Grange. Mine is already marked.

**BEACON VALLEY GRANGE #103**

*Corr: Joanne Cipriano*

Officer attendance at our December meeting was again 100%. We had 20 attend this meeting and Christmas party. We had three representatives from Tender Years Pre-School which we are helping as one of our Community Service Projects. Jean Meehan, Chairperson of the Community Service Committee presented them with four boxes of goodies.

We are still working on our new roof headache. This is a MUST.

We thank all our members for the donation of raffle gifts and for selling and buying tickets. also for the extra donations they sent with their ticket returns. Can't tell you how much we made as of this writing the drawing is not until the end of this week.

Hoping to save money on fuel, our meetings in January and February will be held on the third Saturday starting at 2:00. We have our monthly tag sales on that day so we will already be there. We thank Nutmeg Pomona for their generous donation to help with our heating cost. It will surely help.

Our next meeting is January 13 - program "Carnations" in charge of the CWA Committee - Marianne Nielsen, John Taylor and Pat Fischer- Bob Sendewicz will supply the refreshments.

**HEMLOCK GRANGE #182**

*Corr: Maureen Sanborn*

**Jan. 13:** The Start of Something Great

**Jan. 27:** Omitted, unless regular meeting is canceled.

**Feb. 10:** Feb. might be short, but it's mighty.

**Feb. 24:** Omitted, unless regular meeting is canceled.

Coffee and refreshments will be served following the meeting.

# Cheshire Grange Awards



At Cheshire's recent open meeting, President Ruel Miller presented awards. Robert Charbonneau (right) received his Golden Sheaf in recognition of 50 continuous years of membership. Tina Marshall-Patterson (left) received the First Place Award from the Association of CT Fairs for best Premium Book. She designed the front cover.

# Storytime with Santa



Harmony Grange held a Christmas Fair in Dec. featuring Storytime with Santa.

# WINDOW TO THE PAST

Photographs are a treasured part of Grange history. Many of them, unfortunately, do not come neatly labeled on the back with names, dates, people or places. These photographs have a history to tell... but about whom or what? Please help us uncover the mystery of faces and places as we look through the Window to the Past. You can contact us by calling (860) 626-5074 or on the web by emailing: [submissions@ctstategrange.org](mailto:submissions@ctstategrange.org).

We received a message from someone who did not leave their name on the December Window to the Past photo. She said that the lady on the left is Beatrice Phelps. The man on the right is Roger Godfrey, who was the Master of West Suffield Grange. She does not know who the lady in the middle is.

We also received a message from Sue (LeVangie) Schmidt on the August photo --

Here are the folks that I recognize. I believe it was taken in the early 70s recognizing a milestone year of Montville Grange. (Perhaps the ten year celebration?) Bill Pearl would have been the current State Master at the time of the photo and Al Beckwith was State Master when Montville Grange was organized by John LeVangie (my Dad) in the 60s.

First row L to R - Dora Holmes, a charter member of Montville Grange; Gretchen Beckwith

Second row L to R - Bill Pearl, Mary (LeVangie) Pearl, ?, Leland Holmes, a charter member of Montville Grange and husband to Dora

Third row L to R - Al Beckwith, ? Peter Sepowicz (sp?), a charter member of Montville Grange

I cannot identify the two women with certainty, but I believe they were both charter members. I think the woman standing next to Peter in the back row might be his mother, Mary Sepowicz - just not sure. Dora and Leland were our next door neighbors on Power House Road when we lived in the Uncasville section of Montville from 1956-1960. They heard a lot about Grange from us during those four years, so when Dad was asked to organize the Montville Grange they were two of the first folks he approached. I remember attending the first meeting. Such good memories!





Hank wishes to thank Karen Macdonald for coordinating this interview with four members of Greenfield Hill Grange. Hank is checking in on this Grange a little more than ten years after they had a large influx of new members.

***What did your Grange do that allowed both long term members and newer members to work together towards protecting your local Grange?***

Ten years ago, the historic building was in need of major repairs and was almost closed as a Grange due to lack of membership. New members led to other new members, and a lengthy coordinated effort focused on fund raising and restoration of the building. Now, new members work with more experienced members with ideas for attention to the grounds and creating attractive signs for the building and for any upcoming events. “Curb appeal” considerations and sandwich signs attract the attention of “drive by” neighbors when they see an attractive setting. Members participate in outreach to community resources for publicity, such as when we recently received a national historic building plaque.

Not all members intend to attend meetings and many experienced members take on many roles “behind the scenes”. As in any organization, we need to find ways to balance and share responsibilities, find ways to communicate, learn how to respect differences and work toward shared goals. This can be challenging when many new members join, and we all need to find a way to help them feel involved, included and appreciated.

We have found it helpful to communicate upcoming events through a printed newsletter, and our secretary has been emailing reminders and invitations to all members. This is helpful for members who are unable to participate in- person to feel a part of the group and connected with what is happening.

***What advice would you give to other Granges***

***that are currently experiencing an influx of new members?***

Welcoming new members is an exciting time! They will be joining experienced members who may serve as examples for format, roles and teaching about the many opportunities that the local, Pomona and State Grange can offer. For inviting and retaining new members, we found it helpful to reflect on what attracted that person to the Grange--there are many possible reasons. For example: invited by a friend...interested in local history and the building...want to learn more about the Grange’s role in agriculture, community service and “what’s in it for me?”...perhaps he or she became curious after winning a blue ribbon at the Agricultural Fair... or have an interest in rentals and hall use...and other reasons. We would suggest encouraging participation in meetings, visit other Granges to see their own style(s) for operating, and connect with the Connecticut State Grange for exploring questions about Grange history and current functions.

We experienced several “waves” of new members over the years, and would encourage individual participation in fund raising, restoration of the building projects, and other events such as public suppers, flea markets and other specialized sales along with the annual Fair. Consider what special interests or talents a new member may have from his or her background. Encourage sharing of new ideas, for example, during COVID, a new member suggested the idea of backyard Drive- in movies, which were an attraction to the community and also profitable.

To encourage attendance and participation during meetings, efforts have been made to include new members in discussions and join committees. Lecturer’s programs are designed to be interactive, fun, interesting and promote fellowship.

The Grange has so many programs, contests and opportunities, it may seem overwhelming to new members who are beginning to learn the basics. We have tried to slowly introduce options such as member benefits and contest possibilities.

Encourage attendance and participation during meetings, efforts have been made to include new members in discussions and join committees. Lecturer’s programs are designed to be interactive, fun, interesting and promote fellowship.

The Grange has so many programs, contests and opportunities, it may seem overwhelming to new members who are beginning to learn the basics. We have tried to slowly introduce options such as member benefits and contest possibilities.

***Do you see a role for the Connecticut State Grange***

*...Continued on page 14*

**HANK . . . Continued from page 13  
in assisting Granges who have a large number of  
new Grangers?**

Through Pomona and the CT State Grange, Greenfield Hill Grange has received much support over the years. Affiliate members served a mentors. Guests from other Granges and visiting State Officers offered encouragement. This assisted with teaching rituals and procedures, helped us to hear about what others are doing, and gave new members a chance to meet fellow Grangers.

Suggestions for additional support and help include clarifying what is available for printed materials about Grange services and possibilities; and to simplify methods for access to them. We would request the development of a very short and clear hard-copy hand-out for defining “what is the Grange?” and “what can the Grange offer for me” (our two Frequently Asked Questions by community visitors).

So much is available through the Granger newsletter, National Grange and the Publicity committee. We would encourage new members to explore these, including on-line research.

New members sometimes welcome the “ways of the Grange” while others find it challenging. The CSGrange does work toward being flexible and at the same time preserving and honoring many of our historic traditions. One example of very helpful connection is when a “School of Instruction” is offered. This is when a State Officer focuses on a topic of Grange practices and procedures and have been offered at the Pomona level and on ZOOM.

The Grange has so much to offer for personal growth

and sharing skills within a community people with similar interests. Overall, we would encourage new members to participate in-person as possible, find ways to join in for events and programs, and invite friends to consider joining! Thank you Hank, please visit us soon!

*Reported by Karen Macdonald with thanks to Geno Piacentini, Jim and Pat Golias and Steve Golias.*

**make today a  
Good DAY!™**

Philanthropy in the Modern Age  
Although always a part of American culture, the way people give - and who we give to - has changed drastically over the past few decades. From major philanthropy to individual donations, how have we shifted our interests, and what comes next?

**Subscribe at  
nationalgrange.org/goodday**

**CONNECTICUT STATE GRANGE**

★ ★ zoom ★ ★

**LECTURERS' ROUND-UP**

**SUNDAY, MARCH 12, 2023  
• 7:00 PM •**

Let's gather VIRTUALLY on ZOOM to discuss the latest information from the CT State Grange Lecturer's Department.

For More Information and ZOOM Credentials:  
CT State Grange Lecturer/Program Director Dave Roberts  
lecturer@ctstategrange.org / granbydavidroberts@gmail.com  
Please Note New Phone Number: (860) 469-5067



George Russell gives the Ag. Committee report while Rob Buck looks on at the December meeting of Mt. Laurel Pomona.



# TAGHANNUCK GRANGE KRAUTING BEE

Offered in conjunction with The Motherhouse Old Style Life-Skills Series of Workshops

**THURSDAY, JANUARY 26, 2023  
1:00 PM**

**TAGHANNUCK GRANGE HALL  
7 DUNBAR ROAD, SHARON, CT 06069  
OFF ROUTE 4 BETWEEN SHARON & CORNWALL BRIDGE.**

Learn how to harness natural microbes to transmute fresh cabbage into delicious nutritious sauerkraut with Motherhouse educator, Tal Hadani-Pease

Discover the magical kitchen alchemy of lacto-fermentation.  
Taste a variety of other veggies Tal has pickled with this method.

**Please Bring:**

- Knife • Cutting board • Bowl • Large spoon • Wide mouth jars

We'll supply the salt and cabbage. Feel free to bring other vegetables to pickle.

**PLEASE RSVP AND EMAIL ANY QUESTIONS TO  
TAGHANNUCKGRANGE@GMAIL.COM OR CALL (860) 364-5373**

## CONNECTICUT STATE GRANGE VIRTUAL SOCIAL HOUR 2023 SCHEDULE

JOIN US FOR A FUN AND CASUAL SOCIAL GATHERING.  
A BRIEF PROGRAM WILL BE PRESENTED. STOP BY AND SAY HELLO!

**JANUARY**

Promoting Your Grange:  
Tips and Tricks from the  
Public Relations Committee  
Thursday, January 26, 2023  
7:00 PM - 8:00 PM

**MARCH**

"Hot Fun In The Summertime"  
Brainstorming Ideas For  
Grange Fundraising Events  
Thursday, March 23, 2023  
7:00 PM - 8:00 PM

**MAY**

Who Are We?  
The Committees of the  
Connecticut State Grange  
Thursday, May 25, 2023  
7:00 PM - 8:00 PM

**JULY**

"Hot Fun In The Summertime"  
Brainstorming Ideas For  
Grange Fundraising Events  
Thursday, July 20, 2023  
7:00 PM - 8:00 PM

**SEPTEMBER**

All You Need To Know  
About The CT State Grange  
Annual Session  
Thursday, September 28, 2023  
7:00 PM - 8:00 PM

**NOVEMBER**

Words of Wisdom:  
Let's Talk Grange Ritual  
Thursday, November 30, 2023  
7:00 PM - 8:00 PM



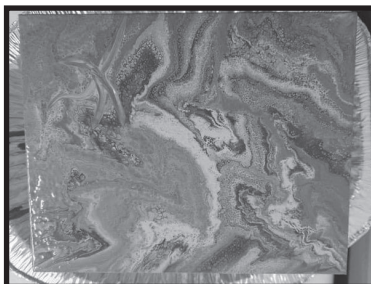
Send an e-mail to [information@ctstategrange.org](mailto:information@ctstategrange.org)  
for the Zoom Meeting Access Information



## Hillstown Paint & Pour



It is awesome trying new things! Hillstown Grange hosted a Paint & Pour at our East Hartford Grange Hall on December 10th. Each picture has its own unique flair. Photos by Michele Rivlin Karasik.



## REMINDER



**Submissions for the  
CT State Grange History Book Project  
"Perseverance: Connecticut Granges  
Make Their Mark On History"  
will be due prior to March 1, 2023.**

We ask those who are working on bios, photos, scans, historical pieces and research to please send your information prior to the above date as we will soon be starting on the next phase of the project.

If you have any questions, comments or concerns, please do not hesitate to contact us at the information below.

**THANK YOU FOR YOU PARTICIPATION & SUPPORT**

For more information:

**Terri Fassio - [information@ctstategrange.org](mailto:information@ctstategrange.org)  
Roy Harrington - [RHarrington@ctstategrange.org](mailto:RHarrington@ctstategrange.org)**

## Loving Those You Don't Like



**Charles W. Dimmick**  
State Chaplain

Cheshire Grange No. 23  
chaplain@ctstategrange.org

Therefore as God's chosen people, holy and beloved, clothe yourselves with hearts of compassion, kindness, humility, gentleness, and patience. Bear with one another and forgive any complaint you may have against someone else. Forgive as the Lord forgave you. *Colossians 3:12-13*

"But to you who are listening I say: Love your enemies, do good to those who hate you, bless those who curse you, pray for those who mistreat you. If someone slaps you on one cheek, turn to them the other also." *Luke 6:27*

If your enemy falls, do not exult; If he trips, let your heart not rejoice. *Proverb 24:17*

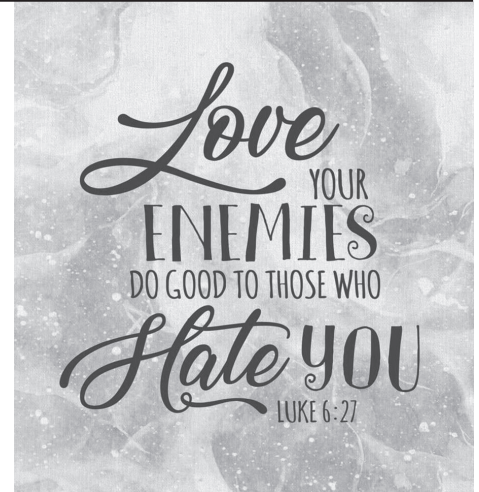
If your enemy is hungry, give him bread to eat; If he is thirsty, give him water to drink. *Proverb 25:21*

Loving your enemies, or even just loving those you don't like is one of the most difficult instructions that scripture gives us. First, we need to make sure which definition of "love" we are dealing with. In a previous column I pointed out that there are four words in Greek which we translate as "love". Each as a different meaning in Greek. In this case, the passage in Mark

in the original Greek uses "agape", meaning unselfish love, or what the early English versions translated as "charity". It definitely does not mean romantic love or brotherly love.

With this understanding of "love" our task is no longer impossible, merely very difficult. We are not told that we must "like" everybody, which for some of us is almost impossible (unless you happen to be Will Rogers, who is famous for saying "I never met a man I didn't like"). Rather we must hold each of our fellow humans in deep enough regard that we treat them with (quoting St. Paul) compassion, kindness, humility, gentleness, and patience.

Rabbi Hillel, b. 110 B.C., is quoted as saying: "That which is hateful to you, do not do to your fellow. That is the entire Torah,



and the rest is its commentary." A more positive restatement (also known as "The Golden Rule") is "Do unto others that which you would wish them to do unto you". This, at least, is a guideline as to how we should be treating others, setting aside any dislike we may have for them, and giving them as much care, respect, and patience as we would wish for ourselves.

### Connecticut Granger Statement of Ownership, Manag. & Circulation

**UNITED STATES POSTAL SERVICE** Statement of Ownership, Management, and Circulation (All Periodicals Publications Except Requester Publications)

Connecticut Granger 15 4 3 2 2 2 0 Sept. 30, 2022 \$5.00

Publication Title: Connecticut Granger

Issue Date: September 2022

Frequency: Monthly

Number of Issues Published Annually: 12

Annual Subscription Price: \$60.00

Issue Date for Circulation Data Below: September 2022

1. Title: Connecticut Granger, Inc. Winchester Center, CT 06094

2. Issue Date: September 2022

3. Issue Frequency: Monthly

4. Issue Number: 9

5. Issue Month: September

6. Issue Day: 30

7. Issue Year: 2022

8. Issue Title: Connecticut Granger, Inc. Winchester Center, CT 06094

9. Issue Address: Winchester Center, CT 06094

10. Issue City: Winchester Center, CT 06094

11. Issue State: CT

12. Issue Zip: 06094

13. Issue Country: USA

14. Issue Post Office: Winchester Center, CT 06094

15. Issue Post Office Name: Winchester Center, CT 06094

16. Issue Post Office Number: 06094

17. Issue Post Office Name: Winchester Center, CT 06094

18. Issue Post Office Number: 06094

19. Issue Post Office Name: Winchester Center, CT 06094

20. Issue Post Office Number: 06094

21. Issue Post Office Name: Winchester Center, CT 06094

22. Issue Post Office Number: 06094

23. Issue Post Office Name: Winchester Center, CT 06094

24. Issue Post Office Number: 06094

25. Issue Post Office Name: Winchester Center, CT 06094

26. Issue Post Office Number: 06094

27. Issue Post Office Name: Winchester Center, CT 06094

28. Issue Post Office Number: 06094

29. Issue Post Office Name: Winchester Center, CT 06094

30. Issue Post Office Number: 06094

**UNITED STATES POSTAL SERVICE** Statement of Ownership, Management, and Circulation (All Periodicals Publications Except Requester Publications)

Connecticut Granger 15 4 3 2 2 2 0 Sept. 30, 2022 \$5.00

Publication Title: Connecticut Granger

Issue Date: September 2022

Frequency: Monthly

Number of Issues Published Annually: 12

Annual Subscription Price: \$60.00

Issue Date for Circulation Data Below: September 2022

1. Title: Connecticut Granger, Inc. Winchester Center, CT 06094

2. Issue Date: September 2022

3. Issue Frequency: Monthly

4. Issue Number: 9

5. Issue Month: September

6. Issue Day: 30

7. Issue Year: 2022

8. Issue Title: Connecticut Granger, Inc. Winchester Center, CT 06094

9. Issue Address: Winchester Center, CT 06094

10. Issue City: Winchester Center, CT 06094

11. Issue State: CT

12. Issue Zip: 06094

13. Issue Country: USA

14. Issue Post Office: Winchester Center, CT 06094

15. Issue Post Office Name: Winchester Center, CT 06094

16. Issue Post Office Number: 06094

17. Issue Post Office Name: Winchester Center, CT 06094

18. Issue Post Office Number: 06094

19. Issue Post Office Name: Winchester Center, CT 06094

20. Issue Post Office Number: 06094

21. Issue Post Office Name: Winchester Center, CT 06094

22. Issue Post Office Number: 06094

23. Issue Post Office Name: Winchester Center, CT 06094

24. Issue Post Office Number: 06094

25. Issue Post Office Name: Winchester Center, CT 06094

26. Issue Post Office Number: 06094

27. Issue Post Office Name: Winchester Center, CT 06094

28. Issue Post Office Number: 06094

29. Issue Post Office Name: Winchester Center, CT 06094

30. Issue Post Office Number: 06094